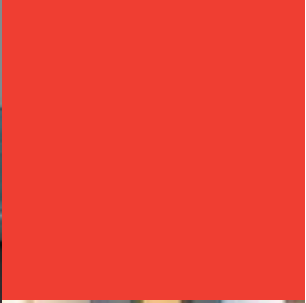




Design - Create - Renovate



Surface Solutions

Index

Products

Welcome to the Parbury surfaces collection. Parbury is a leading supplier to the cabinet industry offering a wide range of surface options. From the sheer elegance and flexibility of design in Solid Surface, the look of Porcelain, and of course a true performer in any benchtop application, Wilsonart high pressure decorative laminate. The brochure offers a guide to choosing a surface product suitable to your needs and budget, as well as handy hints on design and colour selection. Please take the time to study the vast options on offer from Parbury. We recommend you visit a Parbury showroom nearest you to experience the benefit of our vast product range.

Planning and Designing

Co-ordination	Page 3
Planning	Page 4-5
20-20 Design	Page 6-7
Colour Planning	Page 8-9

Surface Solutions

Laminate Surfaces



With over 220 designer colours to choose from the internationally recognised Wilsonart range of laminates offers the most cost effective solution for any benchtop surface. Wilsonart laminate offers a vast selection of designs, resistant to normal household chemicals and a safe environment against deadly bacteria.

Details	Page 10
Ideas	Fold out
Colour Concepts	Fold out
Colour Range	Fold out



Other surface options	Page 12
-----------------------	---------



Co-ordination

Parbury

The integration and colour coordination of the various elements that make up your kitchen is one of the keys to modern kitchen design. It's also potentially one of the most confusing areas and difficult to achieve. Complete colour coordination is no longer just a pipedream. Today dishwashers and fridges can be clad in laminated panels while paints can now be colour matched to Wilsonart laminates, giving an overall integration between benches, doors, handles, splash-backs, paints and appliances.

The Parbury Colour Story

Every Parbury product you choose for your kitchen can be perfectly coordinated in colour and surface texture – benchtops, doors, handles and cornice mouldings.

The Parbury Colour Story starts with Wilsonart 'state of the art' laminates, most frequently used on benchtops. This is a truly international range, combining local and global trends, spanning over 220 colour options. The Wilsonart range is used as a focus for all other Parbury kitchen products to create colour compatibility and coordination. In particular, Wilsonart patterns, popular choices for benchtops, are tonally linked to the solid colours in the Wilsonart range and to other Parbury products.

Consequently, when using any Parbury product, you can be confident there is a coordinated match to a Wilsonart colour – whether it be a door, panel, handle or cornice moulding. Specifically these include:



A range of 78 colours manufactured in pre-finished melamine board. Panelart provides the traditional plain faced doors and panels with square edges that are edged in either 0.4mm melamine edging for a minimal cost or for a little extra, a durable 2mm PVC edging.



A range of 78 colours manufactured in high moisture resistant medium density fibreboard with a pre-finished melamine face. Hardform provides a modern sleek look through the process of rounding the edges, giving soft curves to your kitchen. The top and bottom of your hardform door is finished in either 0.4mm melamine edging or 2mm PVC edging. Parbury Hardform is backed by a 10 year warranty.



Colorform is a vacuum formed, vinyl wrapped door manufactured on an 18mm high moisture resistant medium density fibreboard. Colorform is available in a range of colours and designs. Colorform allows you the opportunity to introduce a design onto a profiled door, whilst offering superior impact and scratch resistance compared with any other type of patterned doors. Colorform is a premium product with colour matched backs and offering a 10 year warranty.



New to the Parbury range, Colocraft combines the profile options of our Colorform® range, with the added dimension of fresh vibrant colour! Colorcraft doors are made using a tough finish paint coating, that is factory sprayed with a range of surface finishes for practicality and increased depth of colour.



Parbury Aluminium Doors offer a contemporary solution to creating new and attractive display areas in your kitchen. Parbury Aluminium Doors are constructed with quality matt finish aluminium frames and include a wide range of clear and patterned glass inserts.

Plan

A new kitchen is always an exciting prospect. Not only can it simplify your life but it can also add to your home's appeal and ultimately, its value.

Good planning is the key, so do your homework. Be aware of what is available, what you can afford and how it will suit your lifestyle.

Above all, your kitchen should always be designed around your individual needs, ways of working, desired atmosphere and of course the size and shape of your room.

The following guidelines highlight some key issues that will help you attain a result that is both functional and attractive. The first step is to consider:

HOW YOUR KITCHEN WILL BE USED

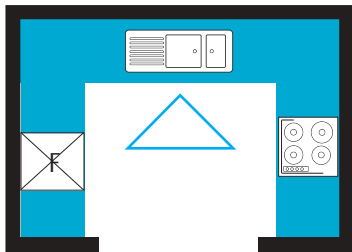
Ask yourself the following questions:

- What aspects of your current kitchen annoy/please you?
These could affect the way you work or you may simply be sick and tired of the old colour scheme
- What atmosphere would you like to create?
Contemporary or heritage, cool or warm, open

and airy, or a country feel. These have implications for colour, materials, lighting and style.

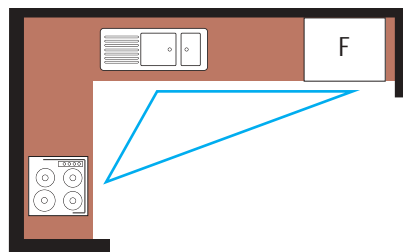
- Who will use your kitchen?
Adults, children, the elderly. (safety and durability.)
- What will the kitchen be used for?
Entertaining, meals, ironing, study/work. (layout, bench space and storage.)
- What storage space will you require?
Food, wine, cutlery, crockery, glassware, appliances and recipe books.
- Do you prefer open shelves, cupboards or drawers? (layout and design.)

Planning the Perfect Kitchen Layout



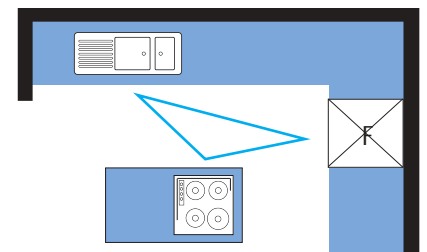
U SHAPED

One of the most versatile, suiting large or small rooms. Safe and efficient, offering maximum bench and storage space. Excellent for one cook.



L SHAPED

A workable shape usually integrated into other living areas. Most suited to large, long or narrow rooms often allowing space for a meals area and two cooks. Great where the cook likes to be part of what's going on.



ISLAND

Combines any shape kitchen with a separate work bench, creating extra work space for food preparation, cooking, dining or entertainment, whilst allowing a feeling of openness. Needs a rather large room and caters well for more than one cook.

- Location of the rubbish bin?
- What appliances will you need?
Influence on layout and the number of power points required.
- Will all work areas have enough lighting?
Consider natural light at different times of the day and the mood you'd like to create.

and extensively trained in total concept kitchen design. A good designer will present ways of achieving things that you more than likely never thought of. The Housing Industry Association has a referral network that can easily put you in contact with one of its CKDs.

Alternatively, visit a Parbury showroom and one of our Design Consultants will be happy to work with you on your design utilising Parbury's 20-20 Design Software. (see details over page)

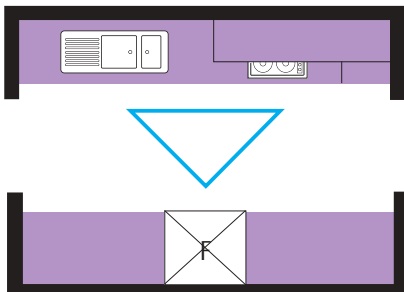
LAYOUT – THE WORK TRIANGLE

As you can see from the kitchen layouts below, there are three essential fittings that need consideration – the sink, the refrigerator and the oven/hotplate. Ideally these should form a work triangle with the sink along one wall and the fridge and hotplate in the two corners opposite – unobstructed and within a few easy paces of one another.

STILL CONFUSED?

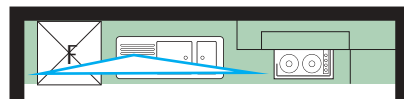
Then you can't go wrong if you consult a Certified Kitchen Designer (C.K.D.). They are experienced

with the Work Triangle



GALLEY

Preferred by professional chefs, it allows the most efficient use of space with cabinets down either side of the room. Works best if one end is closed to prevent through traffic and requires good lighting. Ideal where space is limited.



SINGLE LINE

Usually needs a minimum of three metres of wall to work efficiently. Best if benchspace is maximised with storage kept overhead and under bench appliances utilised. Perfect for small rooms and where windows are above bench.

20 - 20

Parbury are the exclusive Distributors of the 20-20 Design Software package which is a sensational design tool for kitchen, bathrooms, shopfitting and office layouts.

Parbury also utilise this software in our showrooms around Australia to provide a specialised design service. Many independant cabinet makers also utilise this software and will be pleased to assist you with your renovation or building project.

How 20-20 works

Step 1



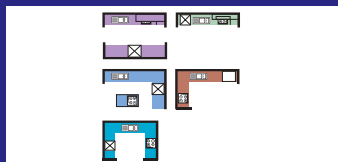
Measure your floor and walls.

Step 2



Place windows, doorways and openings.

Step 3



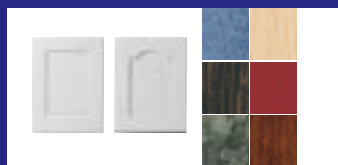
Select your kitchen layout (eg U-shaped or Island)

Step 4



Design your cabinet layout and appliance requirement... don't forget to consider storage requirements - see the Parbury Storage Solutions brochure for ideas.

Step 5



Choose your door, benchtop material and colour selection.



All plans and elevations can be produced both with or without dimensions, and with the facility for you to add notes and specific dimensions and details as required.



Design

Parbury Design Solutions

The benefits of designing your project in 20-20

- Fully changeable rendered images allowing you to select from a range of material, colour schemes and inclusions eg. door handles, pantry and storage solutions.
- Detailed plans and elevations - accurate drawings that can be utilised by your builder or cabinet maker.

Working with a kitchen professional you are able to mix textures and styles to explore your dream options.



20-20 provides four rendering views, floor plans, elevation, perspectives and overhead view renderings as well as a Virtual Showroom movie.

More Information

Visit the Parbury website parbury.com.au to be inspired by a range of kitchen images designed in 20-20 and details of a local cabinet maker who utilises this package. Alternatively visit one of our showrooms.

Colour

Colour is the single most important element in styling a room. Choose colours that reflect your lifestyle or to create a special mood.

The opportunity provided by today's colours gives you many options for enriching and expressing a room's character, moods and feelings.

Sometimes too much choice can be confusing and many people revert to old comfortable and safe boundaries.

To build confidence with colour you need to explore ways of using colour palettes and seeing the exciting relationships that exist.

THE COLOUR WHEEL

Around the edge of the circle are the three primary colours (red, blue and yellow) and various combinations of these primaries. The colours around the edge of the circle are the pure colours, and for every pure colour there are a range of other tones, inching towards the centre of the circle.

Colours on the blue and green side of the wheel are cool and receding (these colours will make a room look bigger). Colours on the red and orange side are

warm and advancing (these colours can make the walls seem much closer).

SOME GUIDELINES

As a rule of thumb, three colours work very successfully in a kitchen, so any additional colours will require careful planning. One useful method is to select one main colour and work around the colour with variations to match the required mood.

Determine the surface you are looking at most of all and select these colours first. This is usually the benchtop and splashback.

When planning your colours, avoid dark colours on doors if the space is small. This closes the walls dramatically. Horizontal work surfaces (benchtops) can introduce some 'drama' to your colour scheme.

Highlights can be incorporated in edges, skirtings, colour strips in doors, drawers and handles.

The floor can be either lighter or darker than the



Using the colour wheel you can examine the colour relationships of various schemes. Three main colour schemes exist: monochromatic, harmonious and complementary.

Monochromatic schemes

are based on tints and shades of one colour. They are very popular as they are easy to use and create a simple background for other features such as outside views.

Harmonious schemes

are based on the use of adjacent or similar colours not more than two colours apart on the colour wheel. For instance yellows, oranges and greens. The common colour in the group is yellow.

Complementary schemes

are based on colours which are opposite each other on the wheel like yellow and violet – they can create a bright cheerful mood.

Planning

Parbury

cupboards. The ceiling and wall colours are then selected to complement the other colours.

Consider Lighting

Different light (morning, afternoon, fluoro, halogen) can play havoc with the true hue of colour. Always look at colours in outside light away from direct sunlight as colours will appear in their truest form in natural light.

In morning light, colours will appear cooler and sharper, while in afternoon light they will have a warmer glow.

Hints

Lightening up a room

Lighten up dark rooms by using pale tints (a tint is a colour with white added). The reflective nature of white will bounce light around the room.

Calm down a room

Create a soothing room by keeping colour schemes monochromatic or harmonious.

Spice up a room

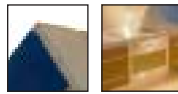
Spice up a chilly room and create a warm atmosphere by choosing yellow, gold, pink or pale red. Warm colours add excitement and energy.

One of the most important decisions that needs to be made in the design of any kitchen is the choice of the benchtop. Not only for its colour and surface texture, but also for its practicality to suit your lifestyle.



Details

Parbury



Laminate Solutions

As one of the world's leading brands, Wilsonart® offers superior quality, a choice of different surface textures and colour coordination possibilities second to none. With one of the largest colour ranges to choose from, Wilsonart® laminates are the essential starting point for any kitchen design. Wilsonart® laminate offers excellent postformability over other brands. The fabrication of smaller edge radiuses give an exceptional new look to laminate benchtops not possible in the past.

Colours

Laminate today looks better than ever. With over 220 colours to choose from, and produced with the latest international technology in printing and finishes, Wilsonart designer laminate has something to offer everyone. Take the time to explore the endless design possibilities of laminate.

Care & Maintenance

Wilsonart laminate offers a high wearing melamine surface. All that is required to maintain the good looks of your Wilsonart benchtop is the daily wipe down with warm soapy water, followed by a rinse with fresh water and a final wipe with a dry cloth. Normal household chemical cleaners are okay for stubborn marks, but leave a residue which must be washed with fresh water to remove. A build up of chemical residue can permanently alter the appearance of your benchtop.

Finishes

Wilsonart laminates are available in many different finish options. Refer to the sample chip or availability chart to see the recommended finish for each design.

1 90 60 50 07 38

Look for these symbols to find out what finishes are available in each colour



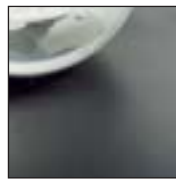
GLOSS 1

A mirror sheen finish which gives a smooth, brilliant appearance.



CRYSTAL 90

A finely beaded texture which minimizes smudges and fingermarks and improves scratch resistance.



MATT 60

A non-directional textured finish with a moderate reflective quality.



TOUCHSTONE 50

A pebbled texture with the look and feel of coarse-grained sand.



TEXTURED SATIN 07

A fine textured satin finish giving excellent wear resistant properties. Finally a satin finish suitable for benchtops.



SATIN (fine velvet texture) 38

A finer finish only used on certain woodgrains to better reflect the natural appearance of this species of timber.



Options

Parbury

Other Surface options available



Ceracina Solid Porcelain



Ceracina is SOLID PORCELAIN. A blend of natural minerals fused with intense heat and pressure into fully vitrified porcelain slabs using the latest technology. The result is an exceptionally hard natural stone like material, yet unlike natural stone, Ceracina gives you the outstanding qualities of fine porcelain.

- Solid Porcelain 20mm benchtop material
- Tough and durable
- Hygienic
- Scratch and stain resistant
- Outdoor applications
- Complimentary and contrasting tiles. Available through Prestige Tile Group

View the full colour range at parbury.com.au or ring 1300 361 313 and ask for a Ceracina Solid Porcelain brochure today.

12 Colours to choose from



Aquanova

Black Forest

Cafe Matrix

Cassata



Trezza Solid Surface



Choosing Trezza for your benchtops, allows you to design any worktop shape you can imagine, with advantages beyond versatility. In the past, 12mm thick solid surfacing or natural stone were the only choices for impressive benchtops, tables and other designer surfaces. That's what makes Trezza a revolutionary advance, because it's actually a 3mm thick solid surfacing that is bonded to a substrate. And the result? Trezza incorporates all the sophistication of traditional solid surfacing in a material that has far more versatility. The finished product is indistinguishable from conventional solid surfacing.

- 3mm thick non-porous surface
- Solid colour throughout
- 10 year guarantee

View the full colour range at parbury.com.au

Trezza is best suited for commercial applications where long, clean and uninterrupted lines are required.

All fabrication must be conducted by a Parbury licensed fabricator.

For more information, please call 1300 361 313.



Parbury has many other products in its portfolio to help you build your dream kitchen. Everything from Designer Doors, Panels, Handles to benchtops, surfaces and accessories.

Our Designer Doors and Handles brochure covers all you need to know about doors, panels, roller shutters and handles for your new kitchen. Ring 1300 361 313 and ask for your copy or visit our website at parbury.com.au

Parbury - Proudly an Australian Owned Company

Parbury was originally established in 1834, the company thrived in the growing Australian colonies and after amalgamation with the Henty family interest in the late 1800s, Parbury became established as a trading company importing, wholesaling, marketing and distributing a variety of goods and commodities for industry and commerce.

Today, more than 160 years later, Parbury continues to offer the widest range of building products for kitchen, bathroom and commercial applications. With branches throughout Australia and New Zealand, Parbury's superior supply and service of leading brands in laminates, doors, cabinet hardware and accessories, is second to none.

The Parbury product portfolio includes designer doors, panels, roller shutters, door handles, laminates, porcelain benchtops and solid surface products, designer tile panels, hinge and drawer systems, wireware pantry and cupboard systems, tidy bins, sinks, taps, and lighting products. Parbury also distribute 20-20, the world's leading design software for kitchens, bathrooms, wardrobes and furniture, providing exceptional 3D rendered images, detailed elevation drawings and EDI functionality.

Designer Doors, Panels & Handles



Benchtops & Surfaces



Accessories



Tambortech

Design



For More Information: parbury.com.au

In Australia phone: 1300 361 313

In New Zealand phone: 0800 657 774

AUSTRALIA

Sydney
166 Newton Road
Wetherill Park NSW 2164

Hobart
32a Chapel St
Glenorchy TAS 7010

Gold Coast
32 Lawrence Dr
Nerang QLD 4211

Newcastle
44 Munibung Road
Cardiff NSW 2285

Perth
47 Belmont Ave
Belmont WA 6104

Townsville
336 Bayswater Rd
Garbutt QLD 4814

Canberra
2\80 Newcastle Street
Fyshwick ACT 2609

Adelaide
Cheltenham Parade
Woodville SA 5011

Darwin
12a Tang Street
Coconut Grove NT 0810

Melbourne
3 International Court
Scoresby VIC 3179

Brisbane
853 Nudgee Rd
Northgate QLD 4013



Colours and specifications subject to change without notice.

